

Two New Gates to Campus Will be Finished by May 20

By W. M. "Mack" Wyatt, Editor

Scene: Construction of the new northeast gate to Alabama College campus at the end of Highland Avenue. Mr. W. M. Jones-Williams, supervisor of the work, is seated in his chair nearby, his keen eye seeing that every brick and every stone is laid to exactly the proper place to make the perfect structure which is vividly pictured in his mind.

I pause for a chat with him about the project, and the chat is prolonged into an hour of discussion, including a great many things about the College, its history, its people, its buildings, the trees, the grounds, the squirrels – and its gates – the significance and sentiments of college campus gates with a class insignia thereon, and the ties that are fastened to the gates at one end, the other ends reaching down through many years and binding many people with memories, stories and traditions of incidents that were enacted within those gates.

When I stopped I had in mind to get Mr. Jones-Williams to tell me how the new gate will look when finished. He did not tell me. He showed me the plans and blue prints, which are almost an exact picture. Then, he said, if that is not sufficient, just stop and look at the gate near Palmer Hall, and you will see a structure of which this will be an exact duplicate; only the new gate is built to a scale one and a half inches larger, over all. This is due to the fact that our brick of today are a fraction smaller than bricks were made twenty-three years ago. Well, that was definite enough to satisfy my desire to know what the new gate will look like.

I was impressed by the observation that the plans by which the gate is being built bear the date of May 3, 1915. They are the self-same, identical plans by which the gate near Palmer Hall was constructed 23 years ago. Mr. Jones-Williams has preserved them. He foresaw a time that was to come when the two gates now under construction would be

called for by the administration. And he would be ready for the call.

Present operating plans are for the completion of the two new gates by the twentieth of May. "They will be completed on schedule," said the supervisor. With a squint of his eye he then told a story about the building of the gate near Palmer Hall. "It had to be done in a certain time. Rain delayed the program a lot. As a last resort, I held an umbrella over Sam Schultz, the brick-layer, in a hard rain all day – and the job was finished on time."

It is the northeast gate at the end of Highland Avenue that is being built now. One half of it is about finished. The other side will be up in a few days. An entering passageway 14 feet wide, for automobiles and vehicles will be provided.

When this gate is finished the crew will move directly across the campus to the other end of the same driveway, where it enters the Aldrich road. Here brick, stone, and all necessary materials are in readiness for the erection of the new Southwest gate. This, also, will be an exact duplicate of the one near Palmer Hall.

From my discussion with Mr. Jones-Williams about the gate, I gained the impression that the southwest gate will be given to the College by the Junior Class of this year, which will be the graduating class of 1939; and that the northeast gate will bear the insignia of the present Sophomore Class, which will be the graduating class of 1940. I would not make this a positive statement, however, not having had an opportunity to verify it with administration and class authorities.

Anyway, I thoroughly enjoyed the hour spent with Mr. Jones-Williams. I found out what I went to find out – how the new gate will look – and many more things besides. He is a most interesting conversationalist. I wish that I might have written a report of the interview that would be as interesting to my readers as was the interview to me.



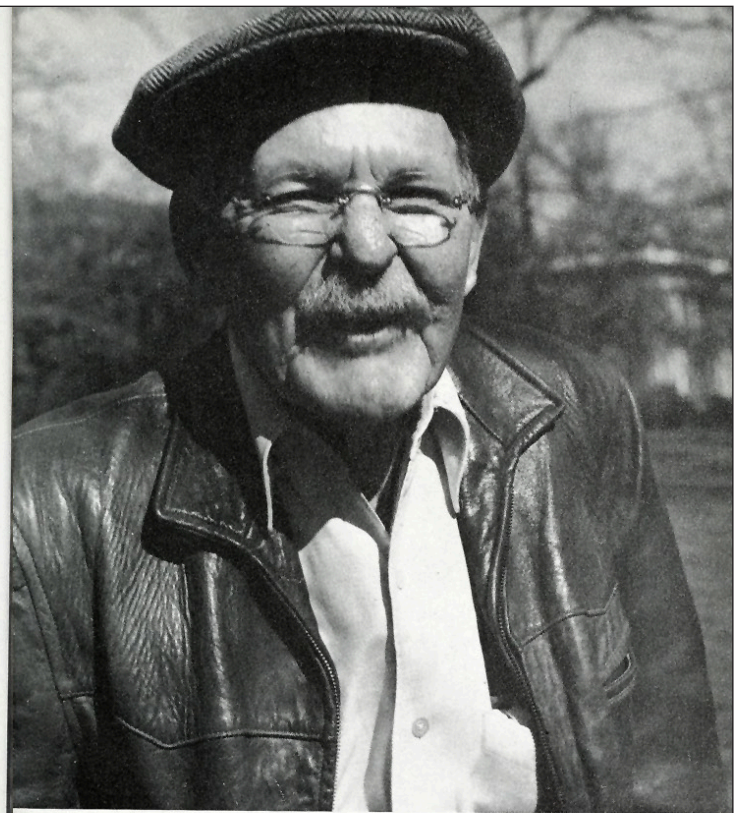
**Mr. Jones-Williams with
President Harmon in front of
Palmer Hall.**

Dedication

FORTY YEARS AGO WHEN ALABAMA COLLEGE WAS STILL THE ALABAMA GIRLS' INDUSTRIAL SCHOOL, MR. JONES-WILLIAMS CAME TO THE CAMPUS AS ENGINEER AND SUPERINTENDENT OF GROUNDS AND BUILDINGS.

HE HAS WITNESSED THE MAKING OF ALL THE TRADITIONS FOR WHICH OUR COLLEGE IS FAMOUS, AND HIS FRIENDLY INTEREST IN ALL OUR ACTIVITIES HAS ENDEARED HIM TO STUDENTS AND FACULTY ALIKE.

FOR HIS FORTY YEARS OF FAITHFUL SERVICE TO THE COLLEGE, HIS GENUINE INTEREST IN ITS ADVANCEMENT, AND HIS MANY CONTRIBUTIONS TO CAMPUS LIFE, WE PROUDLY DEDICATE THE 1944 MONTAGE TO MR. W. M. JONES-WILLIAMS.



MR. JONES-WILLIAMS