

*for the*  
**FINEST QUALITY**

**Visit Our NEW MODERN  
PRINTING PLANT**

**Advertising  
and  
Brochures**

**Commercial  
Printing  
and  
Stationery**

**Publications  
and  
Advertising  
Photography**

**TIMES**  **PRINTING CO.**

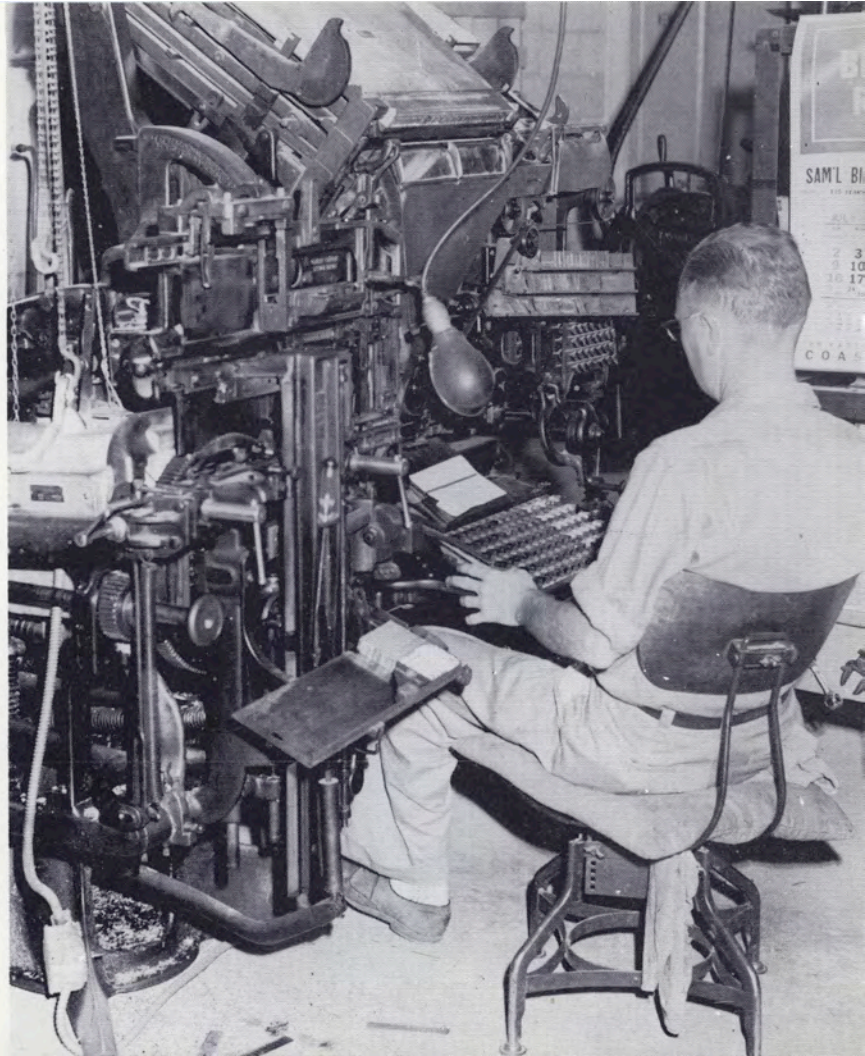
**OFFSET LITHOGRAPHY**

**PRINTING**

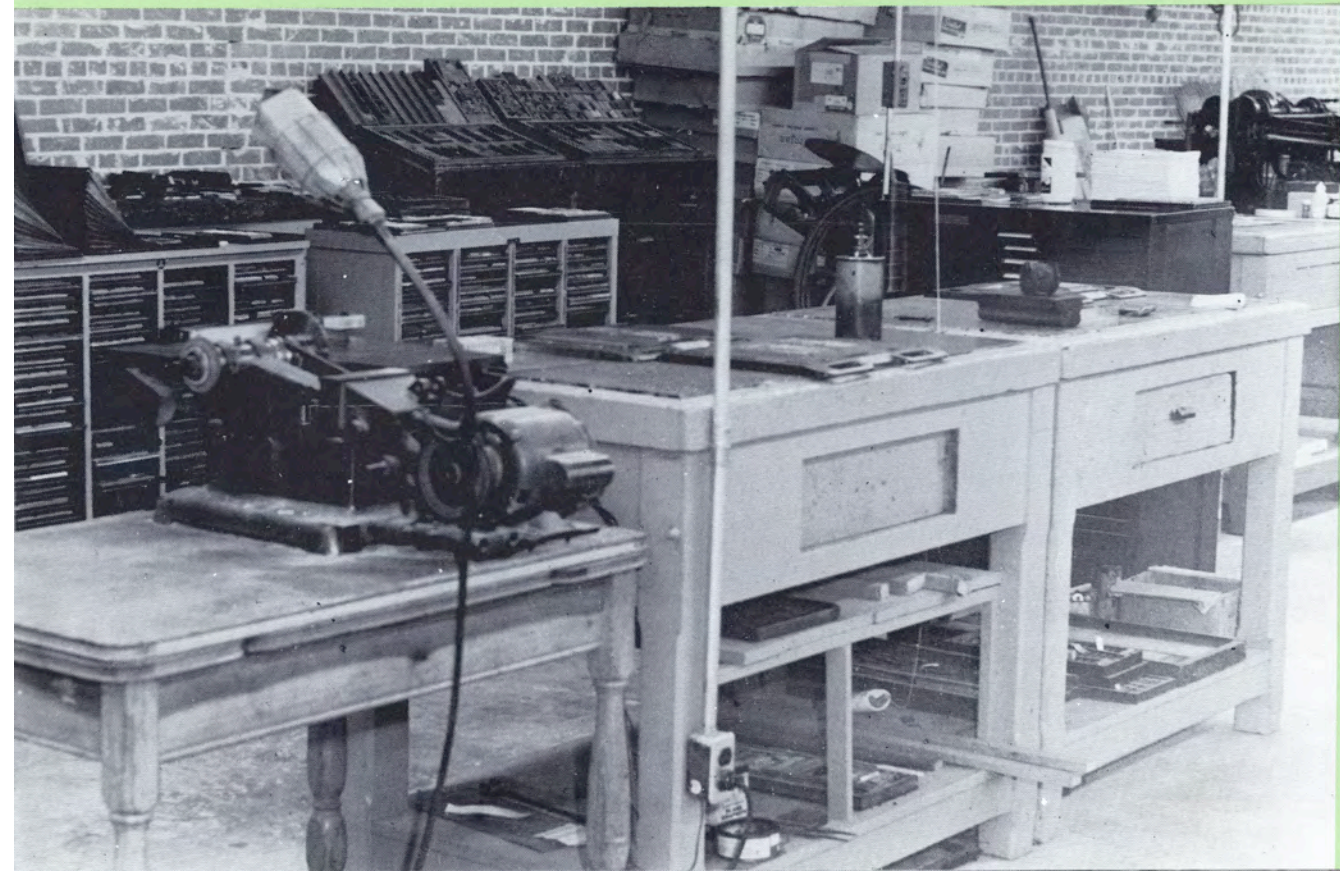
**PUBLICATIONS**

# Typesetting Machines and Composing Room

Our typesetting equipment includes two Linotype machines (Model 14 and Model 5) with a sufficient variety of type faces for composition on books, catalogs, brochures, circulars and diversified forms of commercial printing.

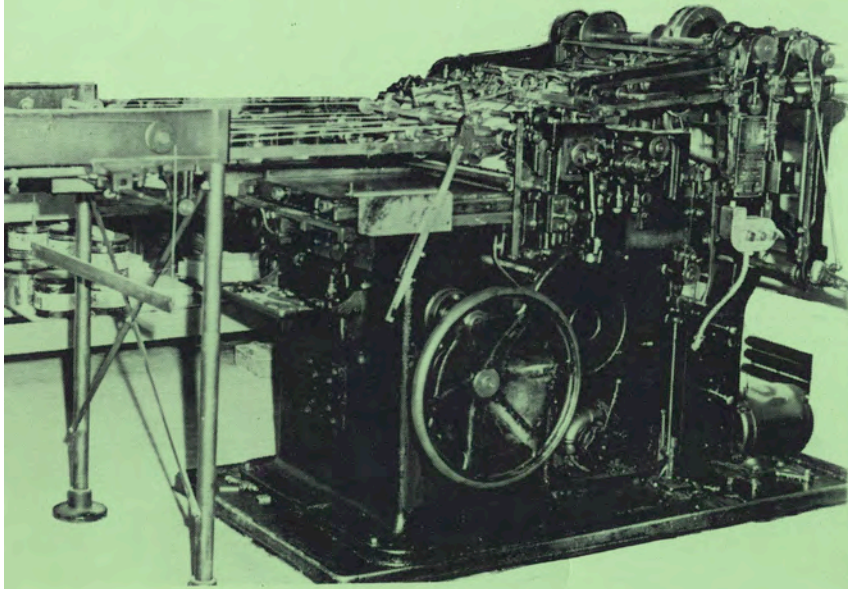






Our composing room equipment supplements our typesetting machines with a wide range of display type and other auxiliary equipment.

# Letterpresses



Our letterpress equipment includes a Kelly automatic cylinder press, a Chandler & Price automatic job press and a Chandler & Price open job press. These machines give us a range of printing capacity from high class book printing to the production of all kinds of small and diversified jobs of printing.

# Offset Platemaking





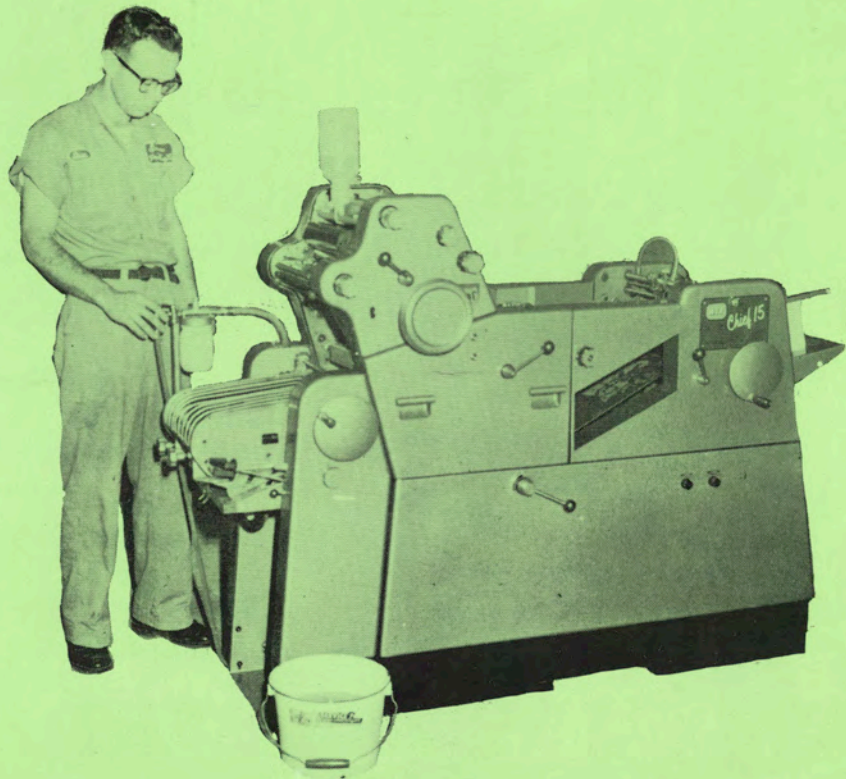
## The Offset-Letterpress Process

The facilities of our photography and platemaking department are equipped to do the entire process of taking a type form, reproducing it on negatives and transferring it to a lithographing plate ready for final production on the offset-lithographing presses.

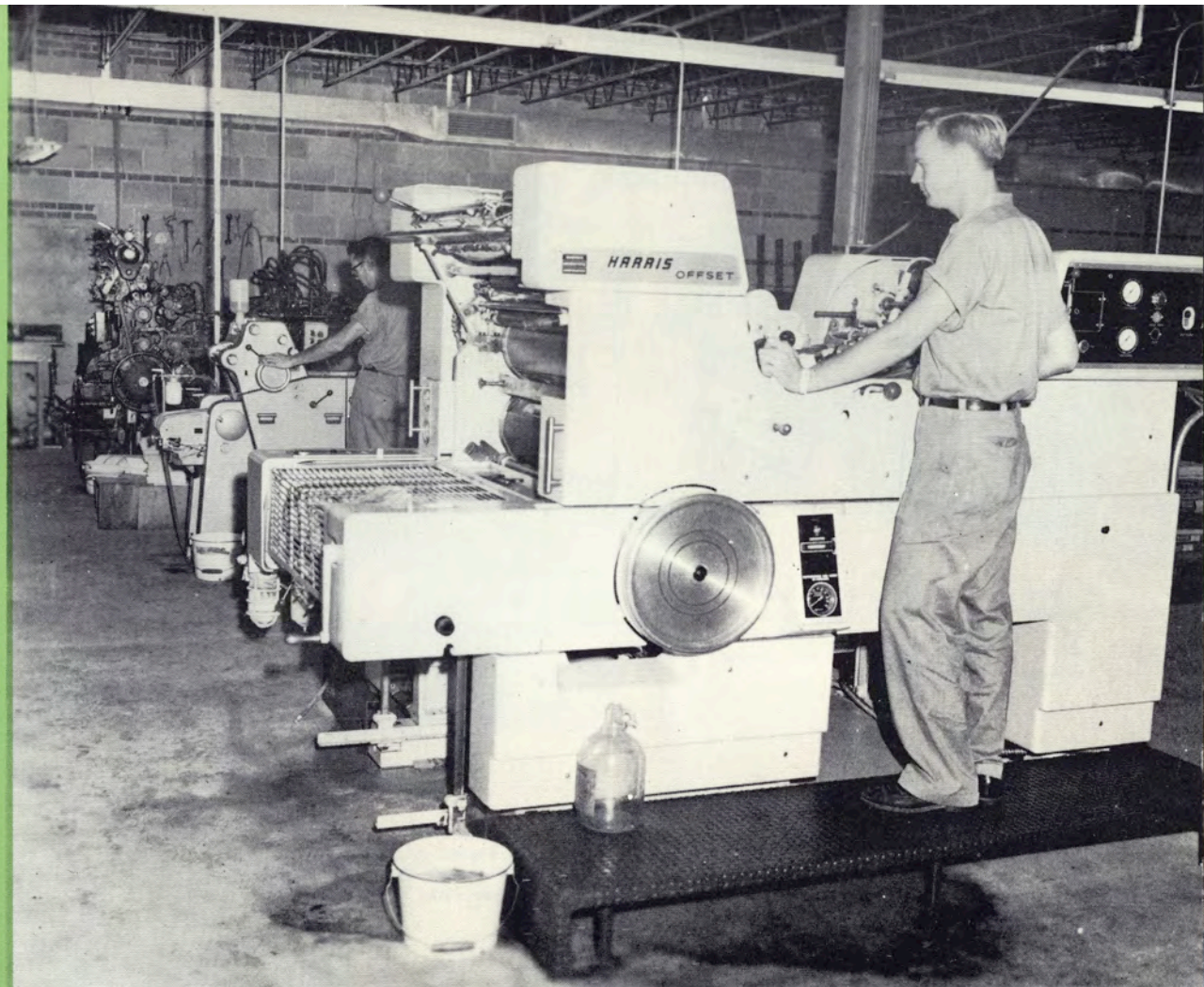
Suppose you need a brochure or advertising booklet or catalog for your business, industry or institution, similar to this one. Our facilities make it possible for us to produce such jobs from beginning to end. We can make the necessary pictures for you, arrange the layout, set the type for your copy and turn out your job complete, with envelopes for mailing to your prospects and customers.

# OFFSET PRESSES

Our offset lithographing department is fully equipped with two large Harris offset presses and one ATF Chief. The capacity of this equipment makes us able to handle large volumes of offset printing (including color printing) on a fast production schedule. Here we can handle high-class printing jobs in sizes from a postal card to a 23x26 sheet in any required combination of colors.

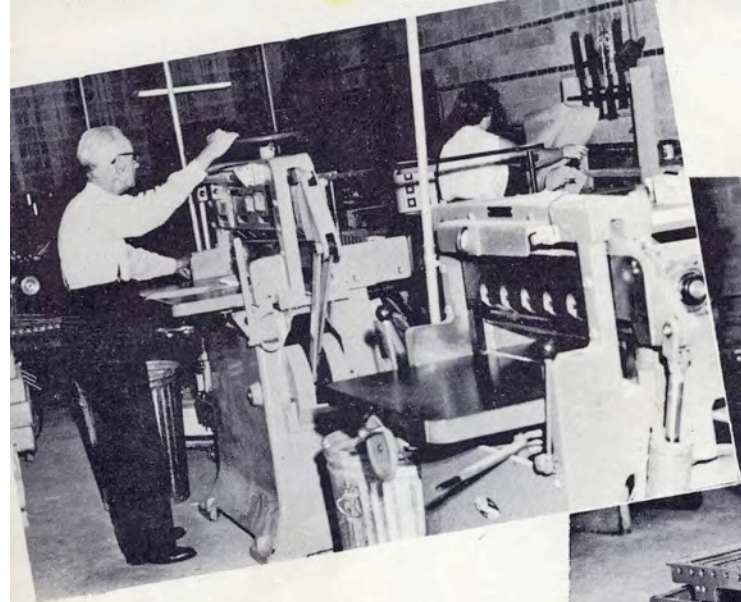




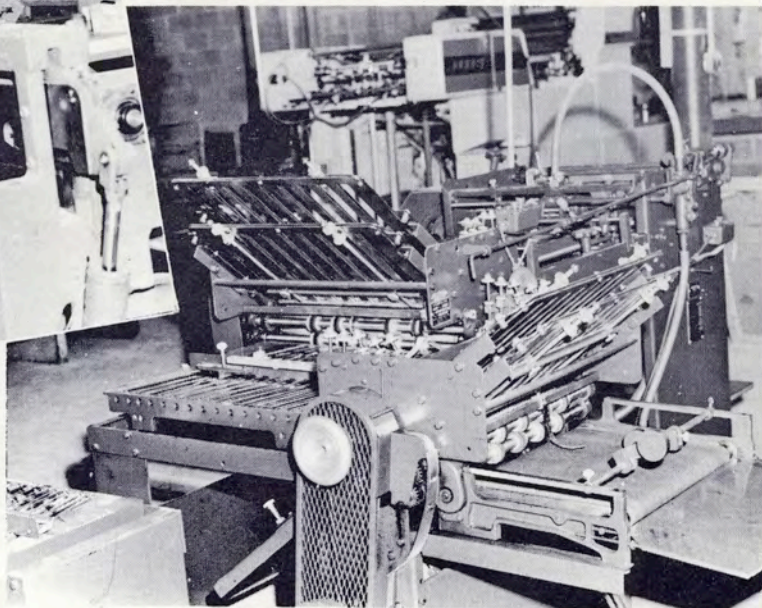


Our offset pressroom





Binding and finishing in our plant is handled speedily with two automatic paper cutters, an automatic folding machine, perforating machine and paper drilling machines.



Our new plant provides space for carrying a large stock of papers in a variety that meets the requirements for fast handling and speedy production of the finished product.

